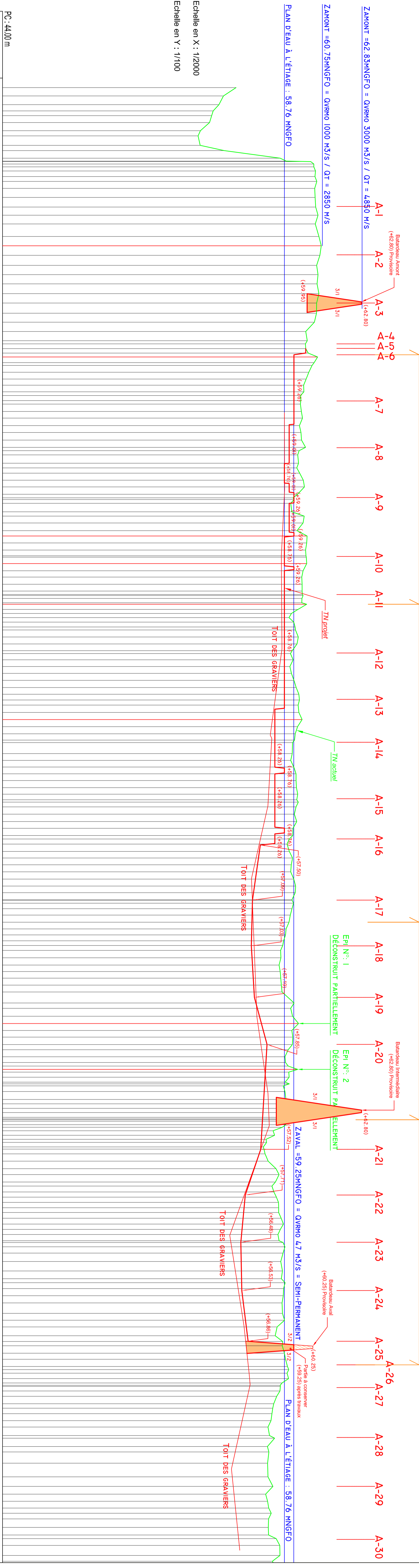


SECTEUR 2

SECTEUR 3

SECTEUR 4

SECTEUR 5



PC : 44,00 m

Altitudes TN	Distances cumulées TN	Distances partielles TN
56.23	0.000	0.000
55.37	0.660	0.660
55.33	17.796	17.136
55.03	24.381	6.585
54.95	26.525	2.144
54.36	45.094	18.569
54.24	50.501	5.407
54.35	60.445	9.944
55.61	70.949	10.504
57.30	77.871	6.922
57.30	78.968	1.097
60.30	87.236	8.268
60.36	93.077	5.841
60.46	98.221	5.144
60.35	105.421	7.200
60.37	114.865	9.444
60.40	124.309	9.444
60.52	133.595	9.286
60.38	142.691	9.096
60.57	155.635	12.944
60.69	165.602	9.967
60.62	175.545	9.943
60.45	186.079	10.534
60.52	195.783	9.704
60.47	205.417	9.634
60.57	215.721	10.304
60.45	225.529	9.808
60.44	236.205	10.676
60.33	245.573	9.368
59.88	255.297	9.724
59.96	264.888	9.591
59.88	273.287	8.399
60.50	281.968	8.681
60.32	287.949	5.981
60.34	297.885	9.936
59.00	305.984	8.099
59.77	315.541	9.557
59.78	318.462	2.921
59.62	327.713	9.251
59.65	339.056	11.343
59.71	346.032	6.976
59.55	353.953	7.921
59.63	361.087	7.134
59.66	369.041	7.954
59.87	376.633	7.592
59.46	384.531	7.898
59.50	383.277	-1.254
59.56	403.862	20.585
59.75	418.064	14.202
59.45	425.780	7.716
59.27	433.230	7.450
59.15	444.132	10.902
59.74	455.941	11.809
59.42	463.807	7.866
59.50	470.808	6.999
59.07	484.144	13.336
59.89	490.108	5.964
59.83	498.304	8.196
59.67	505.887	7.583
59.69	512.472	6.585
59.69	519.863	7.391
59.69	527.094	7.231
59.68	534.849	7.755
59.47	540.882	6.033
59.00	546.351	5.469
59.32	554.885	8.534
59.40	564.704	9.819
59.40	575.222	10.518
59.42	582.440	7.218
59.17	589.548	7.108
59.22	599.064	9.516
59.05	606.145	7.081
59.13	613.296	7.151
59.26	620.573	7.277
59.26	628.096	7.523
59.05	635.803	7.707
59.55	641.193	5.390
59.48	646.473	5.280
59.52	654.157	7.684
59.69	661.642	7.485
59.45	669.085	7.443
59.33	676.516	7.431
59.29	683.140	6.624
59.17	689.262	6.122
59.09	704.385	15.123
59.25	713.315	8.930
59.37	718.455	5.140
59.30	729.485	11.030
59.46	739.706	10.221
59.41	745.628	5.922
59.37	753.084	7.456
59.28	760.735	7.651
59.41	768.304	7.569
59.21	775.564	7.260
59.20	783.075	7.511
59.00	792.071	8.996
59.12	799.733	7.662
59.10	806.564	6.831
59.12	813.725	7.161
59.00	821.056	7.331
59.25	828.660	7.604
59.35	835.900	7.240
59.33	842.825	6.925
59.16	850.181	7.356
59.16	859.680	9.500
59.07	866.358	6.678
59.00	873.634	7.276
59.85	880.857	7.223
59.82	888.187	7.330
59.72	893.292	5.105
59.56	903.338	10.046
59.58	911.068	7.730
59.48	918.726	7.658
59.54	925.513	6.787
59.57	932.447	6.934
59.60	939.717	7.270
59.64	946.913	7.196
59.27	959.444	12.531
59.29	966.593	7.149
59.10	973.273	6.680
59.10	979.876	6.603
59.15	987.239	7.363
59.20	994.156	6.917
59.18	1001.900	7.744
59.96	1007.329	5.429
59.79	1014.717	7.388
59.82	1020.748	6.031
59.01	1027.682	6.934
59.80	1036.131	8.449
59.80	1041.345	5.214
59.79	1051.104	9.759
59.84	1059.411	8.307
59.83	1068.713	9.302
59.86	1078.153	9.440
59.84	1085.801	7.648
59.17	1092.294	6.493
59.60	1101.199	8.905
59.66	1109.105	7.906
59.75	1116.421	7.316
59.91	1124.006	7.585
59.48	1131.873	7.867
59.29	1138.070	6.197
59.29	1145.836	7.766
59.21	1156.321	10.485
59.34	1161.742	5.421
59.45	1168.113	6.371
59.46	1172.773	4.660
59.59	1177.793	5.020
59.59	1183.804	6.011
59.59	1189.881	5.977
59.55	1195.514	5.633
59.42	1200.853	5.339
59.79	1207.339	6.486
59.79	1213.730	6.391
59.69	1220.285	6.555
59.57	1229.071	8.786
59.66	1239.023	9.952
59.60	1247.124	8.101
59.72	1257.420	10.306
59.70	1264.309	6.889
59.64	1272.423	8.114
59.66	1283.356	10.933
59.77	1290.572	7.216
59.38	1297.998	7.426
59.28	1306.834	8.836
59.67	1312.827	5.993
59.70	1325.141	12.314
59.82	1331.503	6.362
59.82	1338.984	7.481
59.80	1346.017	7.033
59.86	1351.712	5.695
59.54	1358.742	7.030
59.53	1364.650	5.908
59.36	1370.219	5.569
59.20	1378.062	7.843
59.11	1388.458	10.396
59.06	1395.687	7.229
59.00	1402.393	6.706
59.98	1411.335	8.942
59.87	1422.943	11.608
59.85	1428.530	5.587
59.88	1440.268	11.738
59.90	1454.535	14.267
59.16	1464.578	9.043
59.78	1472.731	8.153
59.84	1480.182	7.451
59.88	1487.259	7.077
59.07	1492.685	5.426
59.03	1498.857	6.172
59.82	1507.509	8.652
59.93	1515.436	7.927
59.82	1528.361	12.925
59.83	1538.876	10.515
59.83	1548.287	9.411

Echelle en X : 1/2000
Echelle en Y : 1/1000

AMÉNAGEMENT DE MONTELLIMAR

RÉHABILITATION DES LÔNES DU VIEUX RHÔNE DE MONTELLIMAR

- PROJET DCE -

LÔNE DE LA ROUSSETTE
IMPLANTATION DU PROJET DU SECTEUR 2 AU SECTEUR 5
- PROFIL EN LONG -

DATE	DESSINE	VERIFIE	EMISSON DU DOCUMENT	MODIFICATIONS
05/02/10	Nguyen QH	ALM		



Compagnie Nationale du Rhône

DATE	CODÉ AFFAIRE	CHAMPS LIBRES	NUMERO CHRONO	INDICE	FOLIO	SUITE
05/02/2010						
Echelle : X _{plan} et X _{pro}			I 00383PL000043			